



**Sichuan HAIDA Rubber Group Co.,Ltd.**  
**Sichuan Tyre & Rubber Co.,Ltd.**

Address: Jianyang City, Sichuan Province, PRC  
Tel: +86-28-27729062  
Fax: +86-28-27729059  
Website: [en.hdtype.com](http://en.hdtype.com)  
E-mail: [hdyx@hdtype.com](mailto:hdyx@hdtype.com)



**2021**  
**product**  
**manual**





**Mileking®**

## CONTENTS



- GROUP PROFILE *P01*
- CERTIFICATES *P02*
- WORLD-CLASS EQUIPMENT *P03*
- INTERNATIONAL EXHIBITIONS AND EVENTS *P04*

 <b>UHP</b>	MK927 <i>P05</i>	MK937 <i>NEW P07</i>	MK927SP <i>NEW P08</i>	MK921 <i>P09</i>
 <b>4*4 / SUV</b>	MK878 <i>P10</i>	MK869 <i>NEW P11</i>	MK868 <i>P12</i>	MK837 <i>P13</i>
	MK829 <i>NEW P14</i>	MK828 <i>P15</i>	MK818 <i>P16</i>	
 <b>ECONOMY PCR</b>	MK668 <i>P17</i>	MK667 <i>P18</i>		
 <b>TAXI TIRE</b>	MK665 <i>NEW P19</i>			
 <b>ALL-SEASONS</b>	MK657 <i>P20</i>	MK637 <i>P21</i>		
 <b>WINTER</b>	MK687 <i>NEW P22</i>	MK617 <i>P23</i>	MK677 <i>NEW P25</i>	MK617SUV <i>P26</i>
 <b>STUDDABLY WINTER</b>	MK627 <i>P27</i>			
 <b>LIGHT TRUCK</b>	MK737 <i>P28</i>	MK717 <i>P29</i>		
 <b>MINI</b>	MK501 <i>NEW P30</i>			
 <b>EV</b>	MK302 <i>NEW P31</i>			
 <b>ST TYRES</b>	MK825 <i>P32</i>			



# GROUP PROFILE



Sichuan HAIDA Rubber Group Co.,Ltd.(hereinafter referred to as HAIDA GROUP) was founded in 1970, it's a wholly owned subsidiary of WULIANGYE GROUP, national appointed and exclusive large scale backbone enterprise in Sichuan Province, committed itself in R&D, manufacturing and marketing of TBR,PCR,TBB tires, it's the largest demonstration base of research and development and production for tires in western China.

HAIDA GROUP located in Jian yang, Chengdu, Sichuan province, nearby TIANFU int'l airport and high speed train and railway station, transportation is very convenient by road or by river and air, its famous brand name covering "HAIDA", "KALEVEI", "MILEKING", "COPARTNER", "LIGHTEN", "YINLU", "TIANFU" etc., including TBR PCR and TBR tires of three categories, twenty five series, more than 1000 varieties of sizes, applying construction machinery, heavy-duty trucks, light trucks, large-scale bus, medium-sized bus, car, SUV and other commercial vehicles and passenger car of all most popular vehicles. HAIDA brand is the world-renowned brand, recommended PCR brand by China's rubber industry, famous brand of Sichuan Province; "TIANFU" trademark is well-known trademark in China.

HAIDA GROUP certified by ISO/TS16949 and ISO9001,ISO14001 GBT28001, CCC, DOT, ECE,GCC,GSO etc., Obtained thirty seven national invention patent and practical patent, its brands enjoyed and favored by domestic and international customers with tire's excellent and stable quality.

Its marketing segments consists of local maintenance, OEM and overseas marketing, and its overseas marketing and sales volume reached US\$113 million, marketing area including North America, South America, Europe, Middle East, Oceania, African and southeast Asia of more than 200 countries or regions. HAIDA GROUP established long-term strategic partnership with Changan Ford, Sichuan Hyundai, Dongfeng Automobile, Dayun Automobile, Sinotruk, Chery automobile, Changan, General Motors, BAIC Motor, Zhongxing Auto, Suzhou Golden Dragon, Jiangling Motors, JAC, FAW and other vehicle factories. HAIDA GROUP owning more than 300 mainstream dealers in local maintenance market of all provinces, autonomous regions and municipalities throughout all China.

HAIDA GROUP main subsidiaries including Sichuan Tire & Rubber Co., Ltd., mainly produce PCR and TBB tires and Sichuan Kalevei Technology Co., Ltd.,mainly produce TBR tires. Its secondary business subsidiaries: Sichuan Jianyang Tianhai Engineering Co., Ltd., Sichuan Haihong Rubber Products Co., Ltd., Sichuan Jianyang Tianli special Rubber products Co., Ltd., Sichuan Chuangui Tianwei tire Co., Ltd., Sichuan Jianyang Chuangxiang Tianfa logistics Co., Ltd., their business scope including: rubber and electronics, special rubber products, logistics and transport, etc.. The group has achieved diversified development.

HAIDA GROUP keeps continuous development and innovation, it has established a national technology center and post-doctoral workstations; its tire yearly production capacity is expected to reach 24 million pcs or sets in 2025, in which 20 million for PCR tires, 3.0 million for TBR tires, 1.0 million for TBB tires.



## CERTIFICATES



E4



DOT



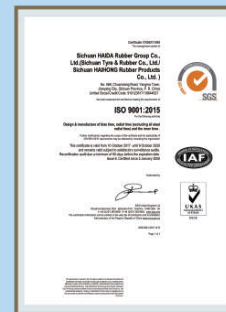
e4



GCC



IATF16949



ISO9001



ISO14001



OHSAS 18001

## WORLD-CLASS EQUIPMENT



1. Automatic chemical powder weighing system for mixer
2. Steel cord calendar made by Comerio Ercole of Italy
3. Steel Cord Calender of COMERIO ERCOLE S.p.A Italy
4. Small angle steel cord cutting line of Slovakia
5. Single tire building machine of HOLAND VMI
6. Steel-belted radial tyre hydraulic dual-mould curing press
7. Dynamic Balance Machine of Japan
8. ALPHA Curemeter Without Rotator
9. High-Speed Testing Machine
10. Rolling Resistance Testing Machine



## INTERNATIONAL EXHIBITIONS AND EVENTS







## UHP TYRES MK927

UHP Asymmetric Pattern Tyre Series  
3D asymmetric pattern design takes superior  
grip performance and shorter braking distances.



### PRODUCT FEATURES



Outside strong blocks design enables the tyre to follow the road's surface contours more closely, helps to reduce blocks deformation while speed cornering, and enhances steering precision & better grip.

Inside wide rib grooves ensures effective water dispersion. Sequential blocks design improves tread rib hardness, enhances braking performance.

Wide rib grooves effectively removes water, provides shorter braking distances and safer handling on wet roads.

Racing compound technology provides superior grip performance on wet road surfaces.

Size	Load Index /PR	Speed	Standard Rim	Inflatable Section Width (mm)	Inflatable Overall Diameter (mm)	Loading Capacity (single/dual)(kg)	Inflation Pressure(kPa)
205/45ZR16	87XL	W	7J	206	590	545	340
225/50R16	96XL	V	7J	233	632	710	340
205/50ZR17	93XL	W	6 1/2J	214	638	650	340
215/40ZR17	87XL	W	7 1/2J	218	604	545	340
215/45ZR17	91XL	W	7J	213	626	615	340
215/50ZR17	95XL	W	7J	226	648	690	340
225/45ZR17	94XL	W	7 1/2J	225	634	670	350
225/50ZR17	98XL	W	7J	233	658	750	340
235/55R17	103XL	V	7 1/2J	245	690	875	340
235/45ZR17	97XL	W	8J	236	644	730	340
235/50R17	100XL	V	7 1/2J	245	668	800	340
245/45ZR17	99XL	W	8J	243	652	775	340
215/40ZR18	89XL	W	7 1/2J	218	629	580	340
215/45ZR18	93XL	W	7J	213	651	650	340
215/55R18	99XL	V	7J	226	693	775	340
225/40ZR18	92XL	W	8J	230	637	630	350
225/45ZR18	95XL	W	7 1/2J	225	659	690	350
225/50R18	99XL	V	7J	233	683	775	340
235/40ZR18	95XL	W	8 1/2J	241	645	690	350
235/45ZR18	98XL	W	8J	236	669	750	340
235/50ZR18	101XL	W	7 1/2J	245	693	825	340
245/40ZR18	97XL	W	8 1/2J	248	653	730	340
235/55R18	104XL	V	7 1/2J	245	715	900	340
235/60R18	103	V	7J	240	739	875	300
245/45ZR18	100XL	W	8J	243	677	800	340
255/35ZR18	94XL	W	9J	260	635	670	340
255/55R18	109XL	V	8J	265	737	1030	340
255/50R18	106XL	V	8J	265	713	950	340
265/35ZR18	97XL	W	9 1/2J	271	643	730	340
265/60R18	110	H	8J	272	775	1060	300
215/35ZR19	85XL	W	7 1/2J	218	633	515	340
225/35ZR19	88XL	W	8J	230	641	560	340
225/40ZR19	93XL	W	8J	230	663	650	340
235/35ZR19	91XL	W	8 1/2J	241	647	615	340
235/50R19	103XL	V	7 1/2J	245	719	875	340
235/55R19	105XL	V	7 1/2J	245	741	925	340
245/35ZR19	93XL	W	8 1/2J	248	655	650	350
245/40ZR19	98XL	W	8 1/2J	248	679	750	340
245/50R19	105XL	V	7 1/2J	253	729	925	340
255/55R19	111XL	V	8J	265	763	1090	340
265/30ZR19	93XL	W	9 1/2J	271	643	650	340
275/40ZR19	105XL	W	9 1/2J	278	703	925	340
225/35ZR20	93XL	W	8J	230	666	650	350
235/30ZR20	88XL	W	8 1/2J	242	650	560	340
245/30ZR20	90XL	W	8 1/2J	248	656	600	340
245/35ZR20	95XL	W	8 1/2J	248	680	690	350
245/40ZR20	99XL	W	8 1/2J	248	704	775	340
255/35ZR20	97XL	Y	9J	260	686	730	350
255/35ZR20	102XL	Y	9J	260	686	850	350
265/50ZR20	111XL	W	8 1/2J	277	774	1090	340
315/35ZR20	110XL	W	11J	320	728	1060	340
265/45ZR21	104	W	9J	266	771	900	300
265/40ZR21	105XL	W	9 1/2J	271	745	925	340
295/35ZR21	107XL	W	10 1/2J	301	739	975	340
265/35ZR22	102XL	W	9 1/2J	271	745	850	350
275/40ZR22	107XL	W	9 1/2J	278	779	975	340
285/35ZR22	106XL	W	10J	290	759	950	340
285/45R22	114XL	V	9 1/2J	285	815	1180	340
295/30R24	105XL	V	10 1/2J	301	788	925	340
255/30ZR26	99XL	W	9J	260	814	775	340
275/25ZR26	98XL	W	10J	283	798	750	340
295/30ZR26	107XL	W	10 1/2J	301	838	975	340

SAVING-oil econmic grade: C

WET-LAND SAFETY GRADE: B

Advanced voice index number: 70

Pattern Guide / 06  
to Steel-belted Radial Tyre





## PRODUCT FEATURES



The water modules with design of 3D drifting simulation provides better braking performance on wet/slippy road.

The straight slots and blocks in the outer of the tread reduce the road noise and improve the grasp force when making a turn.

The design with strengthening rib in inner of tire shoulder increases the rigidity of the pattern blocks, ensures better steerability of the tire.

Size	Load Index /PR	Speed	Standard Rim	Inflatable Section Width (mm)	Inflatable Overall Diameter (mm)	Loading Capacity (single/dual)(kg)	Inflation Pressure(kPa)
205/55R16	91	V	6 1/2J	214	632	615	300
205/60R16	92	H	6J	209	652	630	300
205/65R16	95	H	6J	209	672	690	300
215/65R16	98	H	6 1/2J	221	686	750	300
215/60R17	96	H	6 1/2J	221	690	710	300
215/55R17	98XL	V	7J	226	668	750	340
225/60R17	99	H	6 1/2J	228	702	775	300
225/65R17	102	H	6 1/2J	228	724	850	300
215/50R18	92	V	7J	226	673	630	300
215/55R18	99XL	V	7J	226	693	775	340
225/55R18	102XL	V	7J	233	705	850	340
225/60R18	100	V	6 1/2J	228	727	800	300
235/45ZR18	98XL	W	8J	236	669	750	340
235/50R18	101XL	W	7 1/2J	245	693	825	340
225/55R19	99	V	7J	233	731	775	300
235/50R19	103XL	V	7 1/2J	245	719	875	340
235/50R19	99	V	7 1/2J	245	719	875	300
245/45R19	102XL	V	8J	243	703	850	340
245/45R20	103XL	W	8J	243	728	875	340
245/50R20	102	V	7 1/2J	253	754	850	300
255/45ZR20	105XL	W	8 1/2J	255	738	925	340
255/55R20	110XL	V	8J	265	788	1060	340

## PRODUCT FEATURES



Outside strong blocks design enables the tyre to follow the road's surface contours more closely, helps to reduce blocks deformation while speed cornering, and enhances steering precision & better grip.

Inside wide rib grooves ensures effective water dispersion. Sequential blocks design improves tread rib hardness, enhances braking performance.

Wide straight grooves coupled with fine slots can effectively drain the water, damage the water film, shorten the braking distance and provide better wet control performance.

Racing compound technology provides superior grip performance on wet road surfaces.

Size	Load Index	Speed	Standard Rim	Inflatable Section Width (mm)	Inflatable Overall Diameter (mm)	Loading Capacity (single/dual)(kg)	Inflation Pressure(kPa)
*235/40ZR17	94XL	W	8 1/2J	241	620	670	340
*245/40ZR17	95XL	W	8 1/2J	248	628	690	340
*255/35ZR19	96XL	W	9J	260	661	710	340
*275/35ZR19	100XL	W	9 1/2J	278	675	800	340
*275/30ZR19	96XL	W	9 1/2J	278	649	710	340
*245/45ZR20	103XL	W	8J	243	728	875	340
*275/30ZR20	97XL	W	9 1/2J	278	674	730	340
*275/35ZR20	102XL	W	9 1/2J	278	700	850	340
*275/40ZR20	106XL	W	9 1/2J	278	728	950	340
*285/30ZR20	99XL	W	10J	290	680	775	340





## UHP TYRES MK921

Action and fashion, elegance and nobility, quality racing tyre with unidirectional pattern.



## R/T TYRES MK878

The special 3D solid pattern design is suitable to the cross-country vehicles on the whole road, with supreme anti-skip performance and extreme severe road passability.



### PRODUCT FEATURES



Optimum water dispersion and steering on both sides and minimum rolling resistance with the four longitudinal transverse grooves and radial sipes.

Lower road noise level and tranquil ride with the extra long tread grooves and fuzzy pattern.

Maximum grip and road adhesion with the pattern block and rib pattern on shoulders.

Strong rim-protecting ring to avoid impact for safe driving at high speed.

### PRODUCT FEATURES



The strong shoulder pattern design and unique wide pattern black provide extreme grip force and handing performance, which ensured the excellent safety handing performance and passability for the vehicle on any severe road condition.

The design of anti-collision wall in the sidewall prevents the puncture, road collision and pressure damage.

Size	Load Index /PR	Speed	Standard Rim	Inflatable Section Width (mm)	Inflatable Overall Diameter (mm)	Loading Capacity (single/dual)(kg)	Inflation Pressure(kPa)
205/50R16	91XL	V	6 1/2J	214	612	615	320
215/55R16	97XL	V	7J	226	642	730	280
205/40ZR17	84XL	W	7 1/2J	212	596	500	350
205/45R17	88XL	H	7J	206	616	560	340
205/50ZR17	93XL	W	6 1/2J	214	638	650	350
215/35ZR18	84XL	W	7 1/2J	218	607	500	350
225/30ZR20	85XL	W	8J	230	644	515	350
245/45ZR20	103XL	W	8J	243	728	875	340
275/40ZR20	106XL	W	9 1/2J	278	728	950	350
275/45ZR20	110XL	W	9J	273	756	1060	350
275/55ZR20	117XL	V	8 1/2J	284	810	1285	340
225/30ZR22	87XL	W	8J	230	695	545	340
235/30ZR22	90XL	W	8 1/2J	241	701	600	340
265/30ZR22	97XL	W	9 1/2J	271	719	730	340
265/40ZR22	106XL	W	9 1/2J	271	771	950	340
295/25ZR22	97XL	W	10 1/2J	301	707	730	340
275/25ZR24	96XL	W	10J	283	748	710	340
245/30ZR24	94XL	W	8 1/2J	248	758	670	340

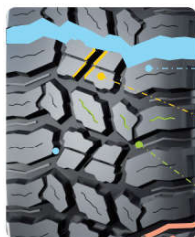
SAVING-oil economic grade: E WET-LAND SAFETY GRADE: C Advanced voice index number: 70

Size	Ply Rating	Load Index	Speed	Standard Rim	Inflatable Section Width (mm)	Inflatable Overall Diameter (mm)	Loading Capacity (single/dual)(kg)	Inflation Pressure(kPa)
LT265/75R16	10PR	123/120	S	7 1/2J	267	810	1550/1400	550
LT285/75R16	10PR	126/123	S	8J	286	840	1700/1550	550
P265/70R17	/	115	T	8J	272	810	1215	300
P285/70R17	/	117	T	8 1/2J	292	838	1285	300
LT265/70R17	10PR	121/118	S	8J	272	810	1450/1320	550
LT285/70R17	10PR	121/118	S	8 1/2J	292	838	1450/1320	550
33x12.50R17LT	10PR	120	Q	10J	318	832	1400	450
35x12.50R17LT	10PR	125	Q	10J	318	883	1650	450
33x12.50R18LT	10PR	118	Q	10J	318	832	1320	450
35x12.50R18LT	10PR	123	Q	10J	318	883	1550	450
37x13.50R18LT	8PR	124	Q	11J	345	934	1600	350
P275/60R20	/	115	T	8J	279	844	1215	300
33x12.50R20LT	10PR	114	Q	10J	318	832	1180	450
35x12.50R20LT	10PR	121	Q	10J	318	883	1450	450
37x13.50R20LT	10PR	127	Q	11J	345	934	1750	450
33x12.50R22LT	10PR	114	Q	10J	318	832	1180	450
35x12.50R22LT	10PR	117	Q	10J	318	883	1285	450
33x12.50R24LT	10PR	104	Q	10J	318	832	900	450





## PRODUCT FEATURES



The design with opened cross-grooves/shoulders provide better capability with self-cleaning and grasp force, improved the trafficability on mud/damaged road.

The utilization with wave-shape steel plates greatly improved the grasp force of the tire.

The design with tooth-mate pattern grooves makes the tires having better self-cleaning capability, and improved the grasp force and trafficability on damaged road.

The design with anti-collision rib improved the self-cleaning capability and avoid the stones clamped and improved the puncture resistance of the tire.

Size	Ply Rating	Load Index	Speed	Standard Rim	Inflatable Section Width (mm)	Inflatable Overall Diameter (mm)	Loading Capacity (single/dual)(kg)	Inflation Pressure(kPa)
33X12.50R17LT	10PR	120	Q	10J	318	832	1400	450
33X12.50R18LT	10PR	118	Q	10J	318	832	1320	450
33X12.50R20LT	12PR	119	Q	10J	318	832	1360	550
33X12.50R22LT	12PR	114	Q	10J	318	832	1180	550
33X12.50R24LT	10PR	104	Q	10J	318	832	900	450
33X14.50R22LT	12PR	117	Q	12J	372	832	1285	550
33X12.50R26LT	10PR	114	Q	10J	318	832	1180	450
35X12.50R20LT	12PR	125	Q	10J	318	883	1650	550
35X12.50R22LT	12PR	121	Q	10J	318	883	1450	550
35X12.50R24LT	10PR	117	Q	10J	318	883	1285	450
35X13.50R26LT	10PR	118	Q	11J	345	883	1320	450
37X12.50R17LT	8PR	124	Q	10J	318	934	1600	350
37X13.50R20LT	10PR	127	Q	11J	345	934	1750	450
37X13.50R24LT	12PR	126	Q	11J	345	934	1700	550
37X13.50R26LT	12PR	117	Q	11J	345	934	1285	550
LT235/85R16	10PR	120/116	R	6 1/2J	235	812	1400/1250	550
LT245/75R16	10PR	120/116	Q	7J	248	780	1400/1250	550
LT265/75R16	10PR	123/120	Q	7 1/2J	267	810	1550/1400	550
LT285/75R16	10PR	126/123	Q	8J	286	840	1700/1550	550
LT275/60R20	10PR	123/120	S	8J	279	844	1550/1400	550

## PRODUCT FEATURES



The deep shoulder pattern design and wide pattern block provide extreme grip force, which ensured the excellent handling and safety performance for the vehicle on the severe condition such as mountain and muddy road etc.

The ideal configuration of the pattern grooves and blocks and the high proportional horizontal grooves guaranteed the excellent anti-skid performance on the muddy road.

The design of anti-collision wall in the sidewall prevents the puncture, road collision and pressure damage.

Size	Ply Rating	Load Index	Speed	Standard Rim	Inflatable Section Width (mm)	Inflatable Overall Diameter (mm)	Loading Capacity (single/dual)(kg)	Inflation Pressure(kPa)
LT245/75R16	10PR	120/116	Q	7J	248	780	1400/1250	550
LT265/75R16	10PR	123/120	Q	7 1/2J	267	810	1550/1400	550
LT285/70R17	10PR	121/118	Q	8 1/2J	292	838	1450/1320	550
33x12.50R17LT	10PR	120	Q	10J	318	832	1400	450
35x12.50R17LT	10PR	125	Q	10J	318	883	1650	450
33x12.50R18LT	10PR	118	Q	10J	318	832	1320	450
35x12.50R18LT	10PR	123	Q	10J	318	883	1550	450
P275/60R20	/	115	S	8J	279	844	1215	300
LT275/65R20	10PR	126/123	Q	8J	279	872	1700/1550	550
33x12.50R20LT	10PR	114	Q	10J	318	832	1180	450
35x12.50R20LT	10PR	121	Q	10J	318	883	1450	450
33x12.50R22LT	10PR	114	Q	10J	318	832	1180	450
35x12.50R22LT	10PR	117	Q	10J	318	883	1285	450
35x12.50R24LT	10PR	117	Q	10J	318	883	1285	450



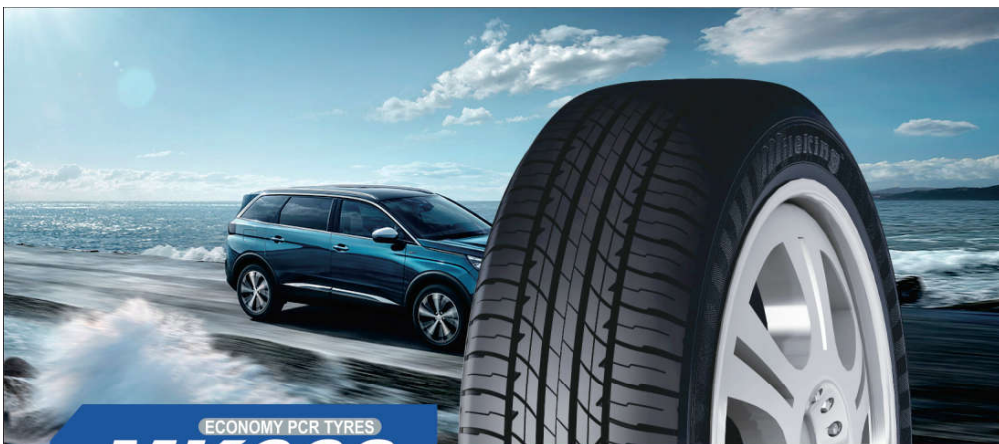


- The coupled design of irregular pattern block provided enhanced traction/grasp performance.
- The outline design with computer simulation provided more stable land-grasp capability.
- The enhanced design with anti-collision rib enhanced the puncture resistance performance.
- The pattern with low sea-land ratio design improved tire service life and mileage.









## ECONOMY PCR TYRES MK668

Optimal design coupled hardness with softness and high percentage silica tread compound improves fuel savings, low noise, safety and economy.

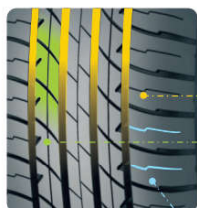


## ECONOMY PCR TYRES MK667

High quality, high performance, low carbon and eco-friendly pattern, modern green tire.



### PRODUCT FEATURES



New formula reduces 30%–40% of rolling resistance, decreases fuel consumption and CO<sub>2</sub> emission load.

Wide tread design increases road contact area, maintains safe ride, and enhances wear-resisting performance.

High ratio straight main sipes design effectively reduces rolling resistance and noise, perfectly combines environmental protection with comfort.

Pitching sequence shoulder blocks design shows outstanding controlling at high speed. Perfect distribution of lug type pattern with thin sipes in the tread enhances traction on wet roads.

### PRODUCT FEATURES



Three broad longitudinal straight groove design with tread effectively increase the longitudinal groove width and offers tires optimum grip on wet roads and powerful water dispersion.

High ratio straight main groove matching whole block design effectively reduces rolling resistance and noise, perfectly combines environmental protection with comfort.

New formula reduces 30%–40% rolling resistance, fuel consumption and CO<sub>2</sub> emission load.

Arc thin sipes pattern design and the effectively segmentation pattern design improving tires grip ability and the safety on driving.

Size	Load Index /PR	Speed	Standard Rim	Inflatable Section Width (mm)	Inflatable Overall Diameter (mm)	Loading Capacity (single/dual)(kg)	Inflation Pressure(kPa)
195/55R15	85	V	6J	201	595	515	300
195/60R15	88	V	6J	201	615	560	300
195/60R15LT	95/91	H	6J	201	615	690/615	450
195/65R15	91	V	6J	201	635	615	300
195/70R15	92	V	6J	201	655	630	300
195/70R15LT-8PR	104/102	H	6J	201	655	900/850	450
205/60R15	91	V	6J	209	627	615	300
205/70R15	96	V	6J	209	669	710	300
205/65R15	94	V	6J	209	647	670	300
205/65R15	99XL	H	6J	209	647	775	340
215/70R15	98	V	6 1/2J	221	683	750	300
225/75R15	102	S	6J	223	719	850	300
195/50R16	84	V	6J	201	602	500	300
195/55R16	91XL	V	6J	201	620	615	340
195/60R16	89	V	6J	201	640	580	300
205/50R16	91XL	V	6 1/2J	214	312	615	340
205/55R16	91	V	6 1/2J	214	632	615	300
205/60R16	92	V	6J	209	652	630	300
205/65R16	95	V	6J	209	672	690	300
215/65R16	98	V	6 1/2J	221	664	775	340
215/65R16	98	V	6 1/2J	221	686	750	300
225/60R16	98	V	6 1/2J	228	676	750	300
205/55R17	91	V	6 1/2J	214	658	615	300
215/50R17	95XL	V	7J	226	648	690	340
215/55R17	94	V	7J	226	668	670	300
215/60R17	96	V	6 1/2J	221	690	710	300
215/65R17	99	V	6 1/2J	221	712	775	300
225/55R17	97	V	7J	233	680	730	300
225/60R17	99	V	6 1/2J	228	702	775	300
225/65R17	102	V	6 1/2J	228	724	850	300
225/60R18	100	V	6 1/2J	228	727	800	300
235/50R18	101XL	V	7 1/2J	245	693	825	340
RUN-FLAT TYRE							
* 225/55RF17	97	V	7J	233	680	730	300

Size	Load Index /PR	Speed	Standard Rim	Inflatable Section Width (mm)	Inflatable Overall Diameter (mm)	Loading Capacity (single/dual)(kg)	Inflation Pressure(kPa)
145/70R12	69	Q	4.50B	150	509	325	300
155/70R12	73	T	4.50B	157	523	365	300
165/70R12	77	T	5.00B	170	537	412	300
155/65R13	73	Q	4.50B	157	532	365	300
155/70R13	75	Q	4.50B	157	548	387	300
165/70R13	79	S	5.00B	170	562	437	300
175/70R13	82	S	5.00B	177	576	475	300
185/70R13	86	T	5.50B	189	590	530	300
155/65R14	75	H	4 1/2J	157	558	387	300
165/60R14	75	H	5J	170	554	387	300
165/65R14	79	H	5J	170	570	437	300
175/65R14	82	T	5J	177	584	475	300
185/60R14	82	T	5 1/2J	189	578	475	300
185/65R14	86	T	5 1/2J	189	596	530	300
185/65R14	90XL	S	5 1/2J	189	596	600	300
185/70R14	88	S	5 1/2J	189	616	560	300
195/70R14	95XL	H	6J	201	630	690	340
205/60R14	88	H	6J	209	602	560	300
215/70R14	95	V	6 1/2J	221	658	710	300
185/65R15	82	V	6J	189	603	475	300
185/60R15	88XL	H	5 1/2J	189	603	560	340
185/65R15	88	H	5 1/2J	189	621	560	300
195/50R15	82	V	6J	201	577	475	300
195/55R15	85	V	6J	201	595	515	300
195/60R15	88	H	6J	201	615	560	300
195/65R15	91	H	6J	201	635	615	300
205/60R15	91	V	6 1/2J	209	627	615	300
205/65R15	94	V	6 1/2J	209	647	670	300
195/60R16	84	V	6J	201	603	500	300
195/65R16	91	V	6 1/2J	214	632	615	300
195/60R16C 10PR	110/107	M	6J	201	640	1060/975	550
195/60R16C 8PR	99/97	O	6J	201	640	775/730	375
1125/80R16	97	M	4 1/2	131	606	730	420
1125/90R16	98	M	4 1/2	131	632	750	420
1155/90R16	110	M	4 1/2	152	686	1060	420
1155/80R17	111	M	4 1/2	152	690	1090	420
1155/90R17	115	M	4 1/2	159	712	1215	420
1165/80R17	115	M	4 1/2	159	686	1030	420
1145/80R17	109	M	4 1/2	145	689	1030	420





TAXI TIRE

# MK665



ALL-SEASONS

# MK657



A diagram showing a cross-section of a multi-layered structure, possibly a geological formation or a material stack. It features several curved, dark grey layers. Three blue circles are positioned on the left side, and three yellow circles are on the right side. A green curved layer is visible in the center. Dashed lines connect the circles to the layers, indicating a relationship or flow.

The special design with gradient chamfer in grooves/blocks with better beauty to avoid the stone clamped, resisted the irregular wearing.

The alkene rubber matched with high structure wearing resistance V10H-UH carbon black, together with the new mixing technology and high wearing resistance receipt, meet the requirements on long mileage performance.

[illegible]

The big pattern block on tire external ensures good rigidity of the tire and provide good steerability.

The pattern design with multiple crossed coupling and waved 3D slot in the tire enhances the intake of snow, improved the strength of snow columns and provides powerful power to the vehicle in the winter.

[illegible]





## PRODUCT FEATURES



Design with three longitudinal zigzag pattern grooves provides water drainage performance in wet road and excellent steer-ability on snow/ice road.

Design with big pattern block outside provides enough rigidity and excellent steer-ability.

Design with multiple crossed pattern inside enlarges snow holding capability and strength of snow column, and enhanced the grip capability.

The fine slots in the pattern reduced the hitting noise, the zigzag slots diffused the noise frequency, making the noise even in various frequency waves.

Size	Load Index /PR	Speed	Wet Grip	Fuel Efficiency	Noise dB	Inflation Pressure(kPa)
★ 145/70R12	69	Q	/	/	/	300
★ 155/65R13	73	Q	/	/	/	300
175/65R14	80XL	T			71	300
★ 185/65R14	82	T			71	300
★ 185/60R15	88XL	T			72	340
185/65R15	92XL	T			72	340
★ 195/50R15	82	H			72	300
195/65R15	95XL	T			72	340
205/55R16	94XL	T			72	340
205/60R16	96XL	T			72	340
215/55R16	97XL	T			72	340
215/60R16	99XL	T			72	340
215/65R16	102XL	T			72	340
★ 245/70R16	107	T			72	300
★ 205/50R17	93XL	H			72	340
★ 205/55R17	95XL	H			72	340
215/55R17	98XL	T			72	340
225/50R17	94XL	T			72	340
225/50R17	96XL	T			72	340
225/65R17	106XL	T			72	340
225/55R17	101XL	T			73	340
225/60R17	103XL	T			75	340
★ 245/65R17	107	T			72	300
★ 215/55R18	99XL	H			72	340
★ 225/60R18	104XL	T			72	340
225/55R18	102XL	T			72	340
235/60R18	107XL	T			72	340
245/45R18	100XL	T			72	340
265/60R18	114XL	T			73	340
285/60R18	116	H			75	300
★ 225/55R19	99H	V			72	300
★ 235/35R19	91XL	H			72	340
★ 235/55R19	105XL	V			72	340
★ 245/45R19	102XL	V			72	340
★ 255/40R19	100XL	V			73	340
★ 255/50R19	107XL	V			73	340



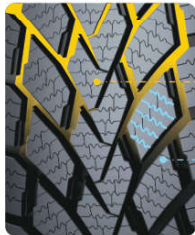


**WINTER TYRES**  
**MK617**

Special pattern design with single-direction and V style sipe provides excellent performance on ice and snow.

**Mileking**

## PRODUCT FEATURES



The wide design and pattern with new 3D sawtooth style fine sipe greatly improved the grasp area of the tread and effectively increased the grasp force of the tire on ice and snow.

The special sipe design with single direction and V shape increased the drainage performance of water and ice, improved the brake and control performance in winter on snow.

The materials such as silica etc are added in the tread compound; it is low-temperature resistance and features excellent adhesion force on the ice/snow.

Size	Load Index /PR	Speed	Wet Grip	Fuel Efficiency	Noise dB	Inflation Pressure(kPa)
165/70R13	83XL	T	C	E	71	340
175/70R13	82	T	C	E	71	300
165/70R14	81	T	C	E	71	300
175/70R14	84	T	C	E	71	300
175/65R14	82	T	C	E	71	300
185/60R14	82	T	C	E	71	300
185/65R14	90XL	T	C	E	71	340
* 185/70R14	88	T	C	E	71	300
195/60R14	86	Q	C	E	72	300
185/60R15	84	T	C	E	71	300
185/65R15	88	T	C	E	71	300
195/60R15	88	T	C	E	72	300
195/65R15	91	T	C	E	72	300
195/55R15	85	T	C	E	72	300
205/65R15	94	T	C	E	72	300
195/55R16	91 XL	H	C	E	72	340
205/55R16	91	T	C	E	72	300
215/55R16	97 XL	T	C	E	72	340
205/60R16	96 XL	T	C	E	72	340
215/60R16	95	T	C	E	72	300
215/65R16	98	T	C	E	72	300
225/55R16	99 XL	T	C	E	72	340
225/60R16	102XL	T	C	E	72	340
225/65R16	100	T	C	E	72	300
215/45R17	91 XL	V	C	E	72	340
215/50R17	95XL	H	C	E	72	340
215/55R17	94	T	C	E	72	300
* 225/50R17	98 XL	H	C	E	72	340
225/45R17	94 XL	H	C	E	72	340
225/55R17	101 XL	H	C	E	72	340
225/65R17	102	T	C	E	72	300
235/55R17	99	T	C	E	72	300
235/45R17	97 XL	H	C	E	72	340
225/40R18	92 XL	H	C	E	72	340
225/45R18	95XL	H	C	E	72	350
245/40R18	93	V	C	E	72	300
245/45R18	100 XL	V	C	E	72	340

SAVING-oil economic grade: E WET-LAND SAFETY GRADE: C Advanced voice index number: 71





NEW

STUDDABLY WINTER TYRES

**MK677**

Mileking



WINTER TYRES

**MK617SUV**

Mileking

## PRODUCT FEATURES



The design with 3D grooves increased the contacting area with ice and snow and improved the grasp force. The pattern design with continuous pattern in the tire cap effectively increased the rigidity of the pattern, the slant fine and wave grooves ensures better stability of steerability.

The optimized design arrangement of stud hole increases the grasp force on snow/icy road and reduced the noise, providing better steerability and traction force on snow/icy road.

The design with directional V-Shape grooves enhances the flowing of water and snow in the grooves, which can effectively drainage the snow and water and provides better traction and grasp force in the snow/icy road.

Size	Load Index /PR	Speed	Wet Grip	Fuel Efficiency	Noise dB	Inflation Pressure(kPa)
<b>PCR</b>						
175/70R13	T	82	C	C	71	300
175/65R14	T	86 XL	C	C	71	340
185/65R14	T	90 XL	C	C	71	340
185/70R14	T	92 XL	C	C	71	340
185/60R15	T	88 XL	C	C	71	340
185/65R15	T	92XL	C	C	72	340
195/65R15	T	95 XL	C	C	72	340
205/65R15	T	99 XL	C	C	72	340
205/55R16	T	94 XL	C	C	72	340
205/60R16	T	96 XL	C	C	72	340
215/60R16	T	99 XL	C	C	72	340
215/55R17	T	98XL	C	C	72	340
225/55R17	T	101 XL	C	C	72	340
225/50R17	T	98 XL	C	C	72	340
225/45R17	T	94XL	C	C	72	340
235/45R18	T	98 XL	C	C	72	340
<b>SUV</b>						
215/65R16	T	102 XL	C	C	72	340
265/70R16	T	112	C	C	73	300
265/65R17	T	116 XL	C	C	73	340
215/60R17	T	100 XL	C	C	72	340
225/60R17	T	103 XL	C	C	72	340
225/65R17	T	106 XL	C	C	72	340
235/65R17	T	108 XL	C	C	72	340
265/60R18	T	114 XL	C	C	73	340
285/60R18	T	116	C	C	75	300
LT275/70R18 10PR	125/122	Q	/	/	/	550

## PRODUCT FEATURES



The wide tire and new 3D saw tooth fine seam pattern design of the crown increase the grip area of the crown and effectively improve the ice and snow grip of the tire.

The unique single guide and V-shaped wide groove design increases the performance of water and snow drainage, and improves the braking and safe handling performance of snow driving in winter.

Silicon dioxide and other materials are added to the tread, which has low temperature resistance and excellent ice and snow adhesion.

The projected small sharp angle ensures the reliable contact of the tyre and the ground surface under low temperature, which also enhanced the grip capability.

The special design with directional pattern and various 3D steel sheets effectively enhanced the grasp capability on icy/snow pavement.

Size	Load Index /PR	Speed	Wet Grip	Fuel Efficiency	Noise dB	Inflation Pressure(kPa)
215/70R15	98	T	C	E	72	300
235/75R15	105	Q	C	E	72	300
215/70R16	100	Q	C	E	72	300
235/70R16	106	Q	C	E	72	300
215/60R17	96	T	C	E	72	300
225/60R17	99	T	C	E	72	300
235/65R17	104	T	C	E	72	300
265/70R17	115	T	C	E	73	300
265/65R17	112	T	C	E	73	300
275/65R17	115	T	C	E	73	300
235/55R18	104 XL	T	C	E	72	340
235/60R18	103	T	C	E	72	300
275/65R18	116	T	C	E	73	300
275/55R20	117 XL	T	C	E	73	340
275/60R20	115	T	C	E	73	300





## WINTER TYRES MK627

Safely Driving on Icy/Snow Pavement.



## LIGHT TRUCK TYRES MK737



### PRODUCT FEATURES



The design of shoulder pattern with rectangular shape and integrated coupling style enhanced the load capability and stable steerability on icy/snow pavement.

The design with three lengthwise zigzag grooves provide better capability to outlet the water and snow, and it also improved the steerability in slippery condition.

The projected small sharp angle ensures the reliable contact of the tyre and the ground surface under low temperature, which also enhanced the grip capability.

The special design with directional pattern and various 3D steel sheets effectively enhanced the grasp capability on icy/snow pavement.

Size	Load Index	Speed	Wet Grip	Fuel Efficiency	Noise dB	Inflation Pressure(kPa)
195/70R15C	104/102	R	A	C	71	450
205/70R15C	106/104	R	A	C	71	450
215/70R15C	109/107	R	A	C	71	450
225/70R15C	112/110	R	A	C	71	450
185/75R16C	104/102	R	A	C	71	475
195/75R16C	107/105	R	A	C	71	475
215/75R16C	113/111	R	A	C	71	475
205/65R16C	107/105	T	A	C	71	475
215/65R16C	109/107	R	A	C	71	475
235/65R16C	115/113	R	A	C	71	475
235/65R16C	121/119	R	A	C	71	575

### PRODUCT FEATURES

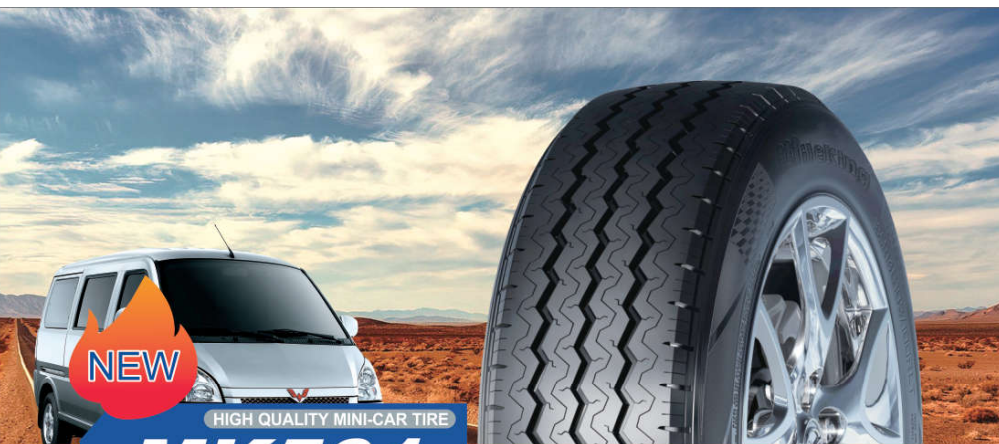


The design with strong shoulder blocks and unique decoupling longitude grooves provides high performance of stable steerability and irregular anti-wearing on various road condition.

The design with three wide longitude water outlet slots and balanced pattern blocks/slots enhances the water outlet performance on wet/slippery road and provides excellent steerability of the vehicle. The outstanding durability provides better mileage of driving. The load capacity is stable and excellent.

Size	Load Index /PR	Speed	Standard Rim	Inflatable Section Width (mm)	Inflatable Overall Diameter (mm)	Loading Capacity (single/dual)(kg)	Inflation Pressure(kPa)
185R14C	102/100	R	5 1/2J	188	650	850/800	450
195/70R15C 8PR	104/102	R	6J	201	655	900/850	450
*215/70R15C	109/107	R	6 1/2J	221	683	1030/975	450
*215/70R15LT	104/101	R	6 1/2J	221	683	900/825	450
185/75R16C 8PR	104/102	R	5 J	184	684	900/850	475
205/65R16C 8PR	107/105	T	6J	209	672	975/925	475
215/75R16C 10PR	116/114	R	6J	216	728	1250/1180	525
235/65R16C 8PR	115/113	T	7J	240	712	1215/1150	475









# МК302



# MK825



## PRODUCT FEATURES



Tyre shoulder with semi-closed transverse pattern grooves design is balance the noise and drainage performance.

[illegible]

## PRODUCT FEATURES



Design of lengthwise grooves with multiple angles provide excellent controlling and steering performance on the dry/wet road.

Strengthened design of carcass enhanced the load and impact capability of the tyre.

[illegible]